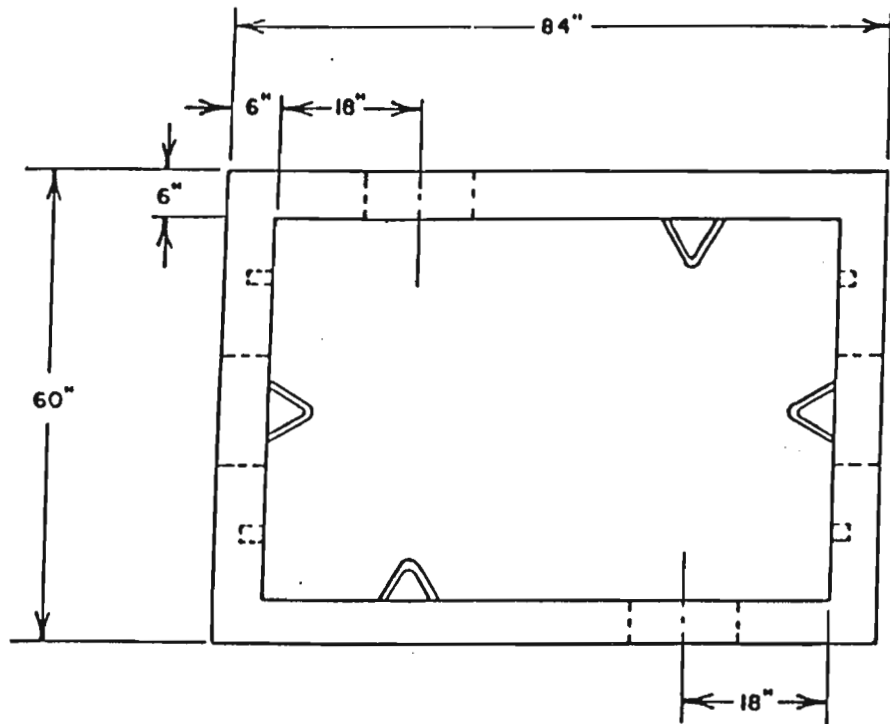


NOTES:

1. UG SERVICES THAT ARE FED FROM ADJACENT LOTS SHALL CROSS THE SIDE PROPERTY LINE AS CLOSE TO THE REAR EDGE OF THE SIDEWALK AS POSSIBLE.
2. ALL METERS SHALL BE LOCATED ON THE FRONT QUARTER OF THE BUILDING ON THE SIDE APPROVED BY THE Town Building Inspector.
3. SERVICE CONDUCTORS SHALL BE RUN TO THE OUTSIDE EDGE OF THE SECONDARY HANDHOLE, PEDESTAL, OR TRANSFORMER WHICH IS NEAREST THE METER LOCATION INDICATED. THREE (3) FEET OF CABLE SHALL BE COILED ABOVE GRADE FOR TERMINATION BY TOWN.

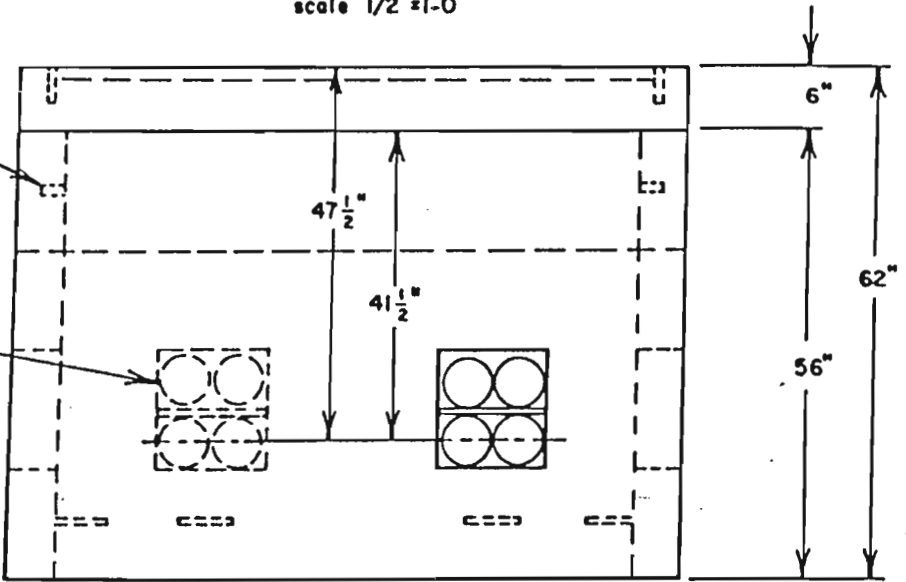
METER LOCATION
FIG 6-2



TOP VIEW
scale 1/2"=1'-0"

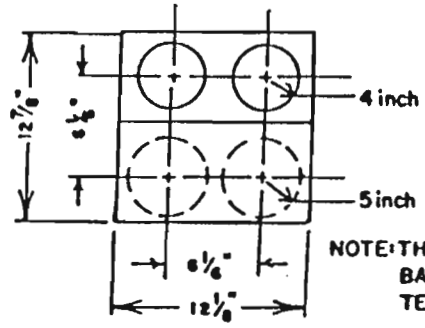
3/4" THREADED
INSERT FOR LIFTING

DUCT TERMINATOR
SEE DETAIL "A" FOR
DIMENSIONS



SIDE VIEW
scale 1/2"=1'-0"

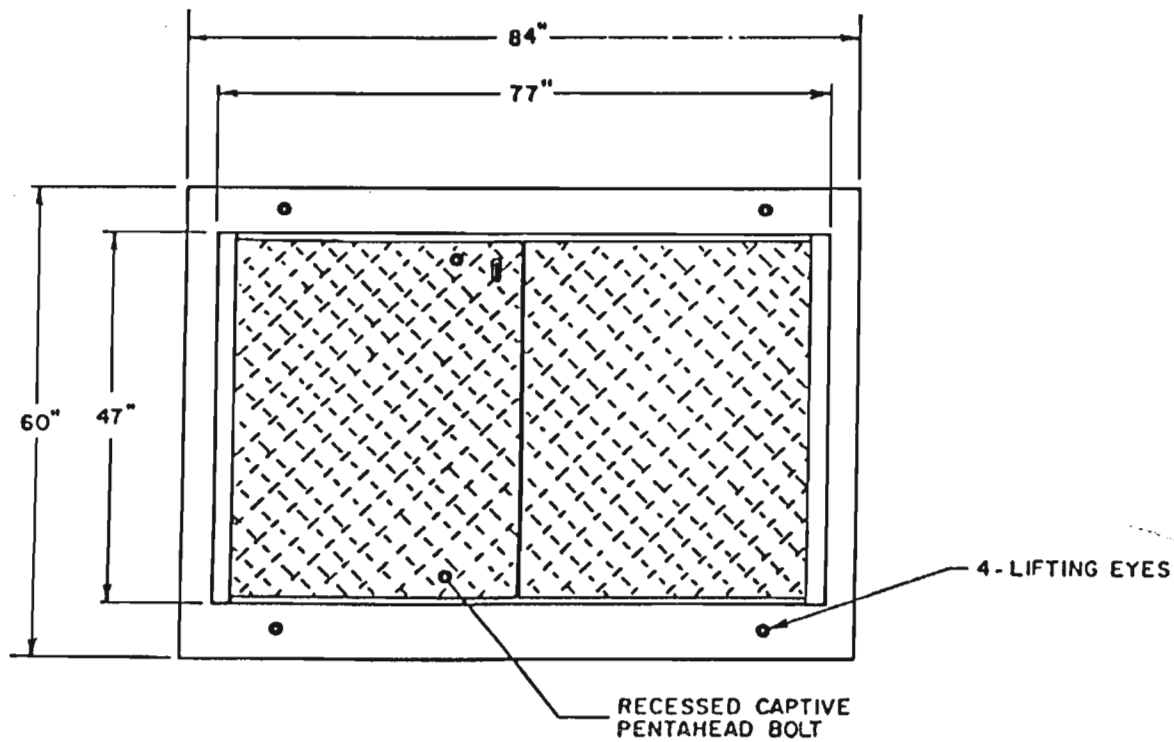
DETAIL A



NOTE: THESE DIMENSIONS ARE
BASED ON "FORMEX" DUCT
TERMINATORS ONLY.

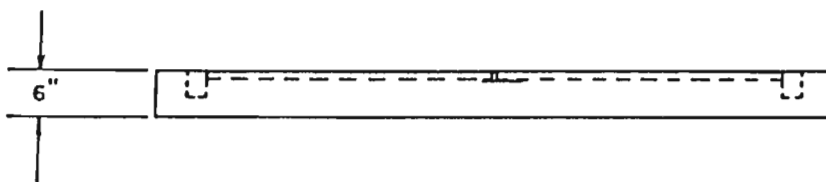
VAULT DIMENSIONS

FIG 6-3



FRAME & COVER TOP VIEW

scale 1/2" = 1'-0"

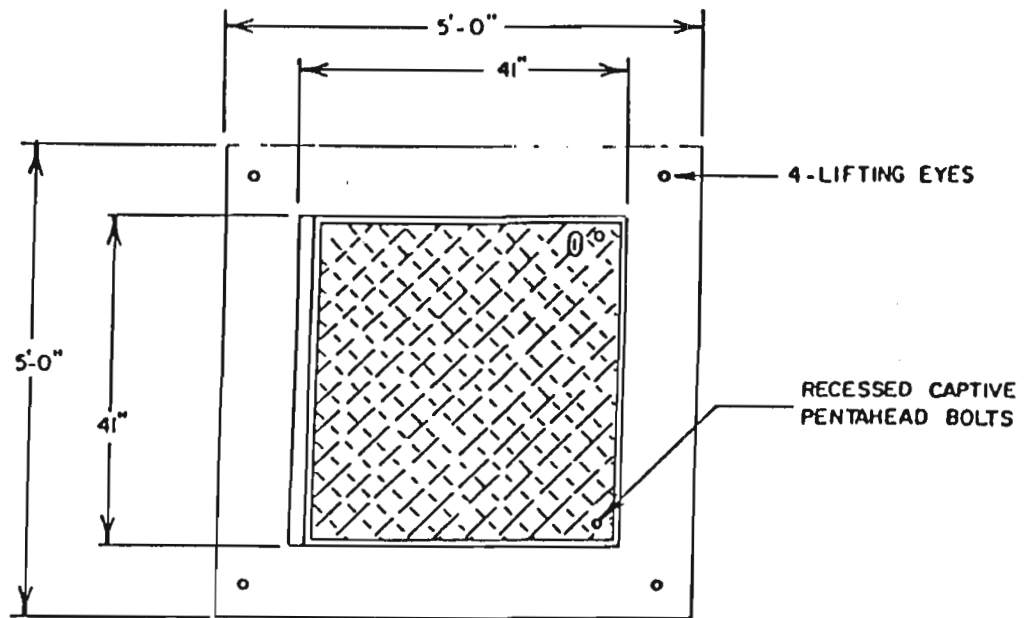


SIDE VIEW

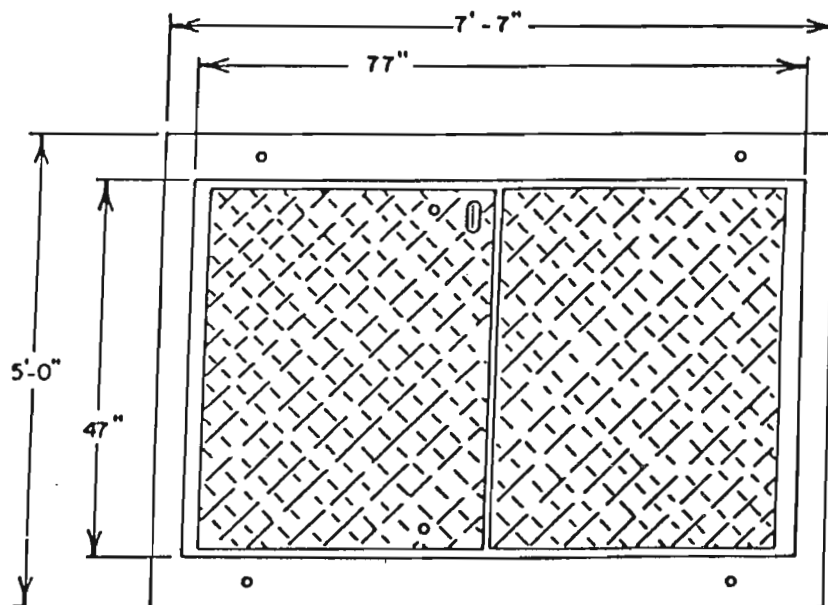
scale 1/2" = 1'-0"

VAULT FRAME AND COVER

FIG 6-4a



LID FOR 4'x4'x4'-8" VAULT

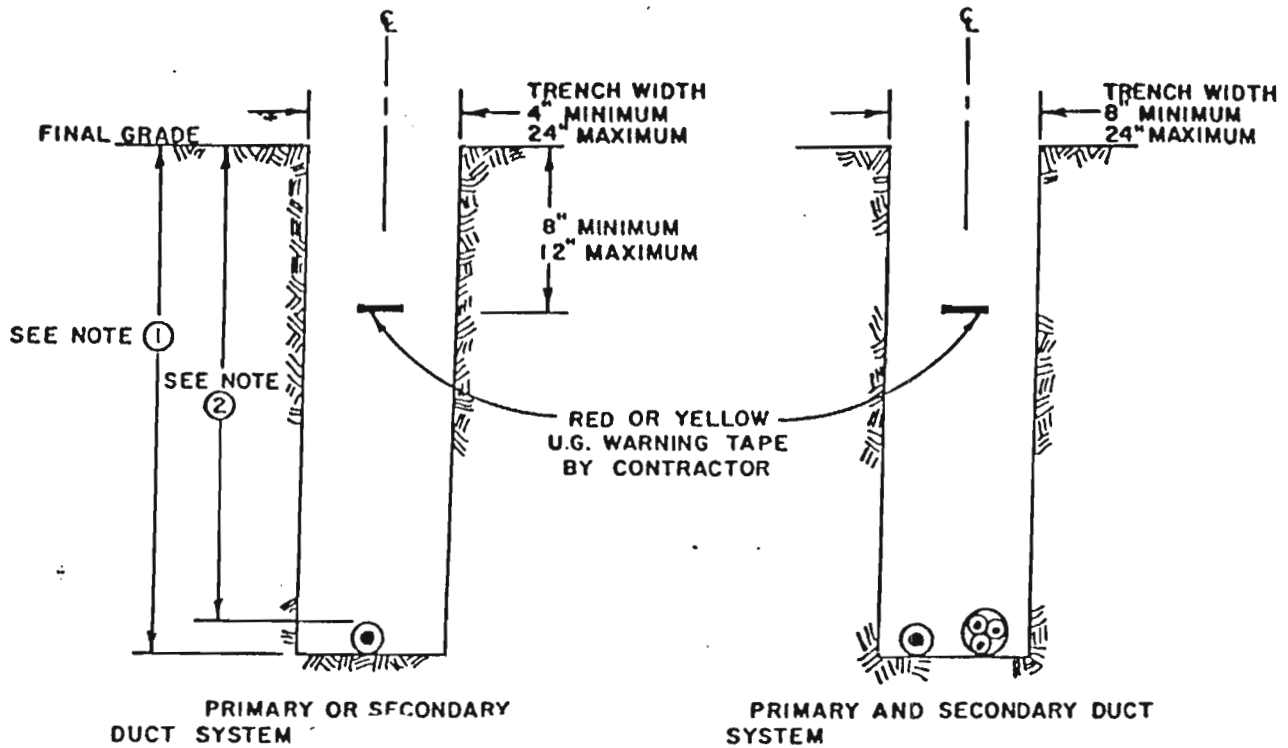


LID FOR 4'x6'x4'x4'-6" VAULT

VAULT LIDS

FIG 6-4b

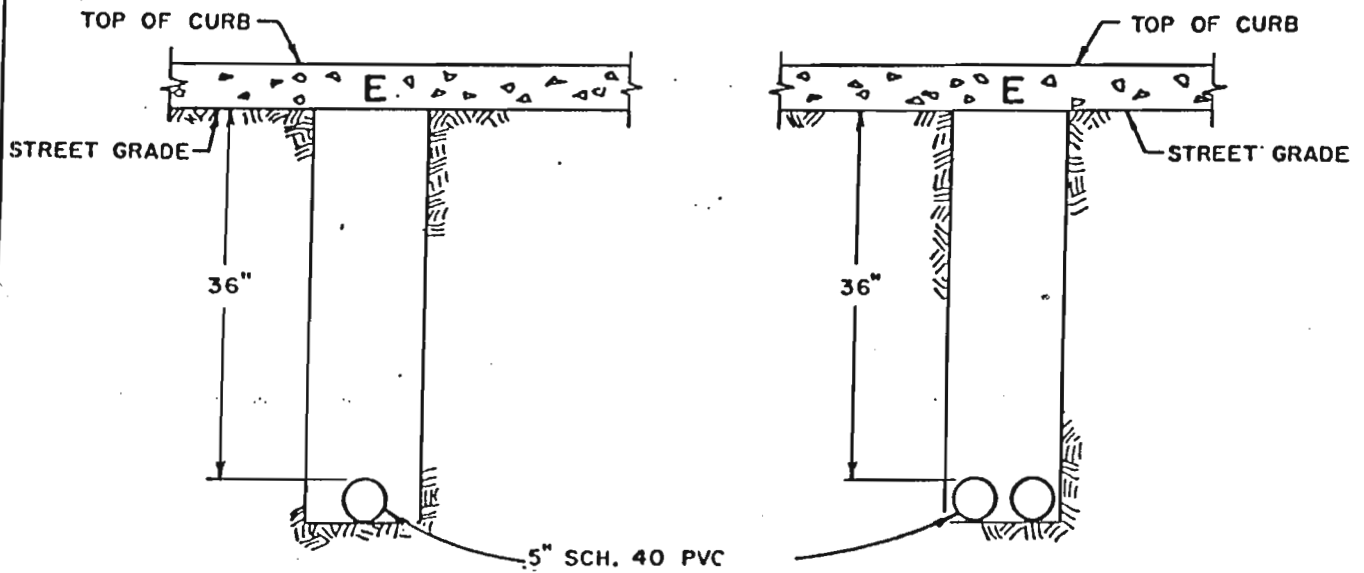
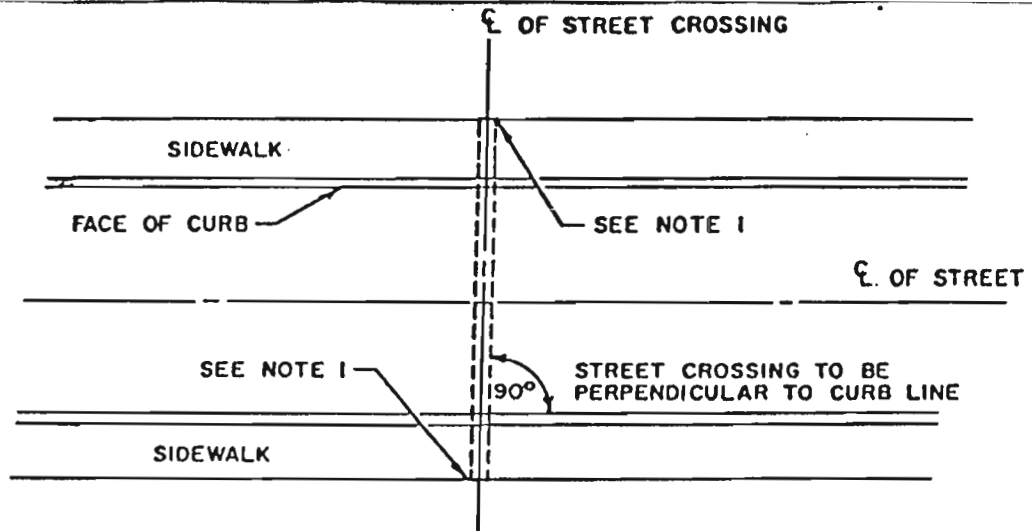
TYPICAL TRENCH CROSS-SECTION



1. (A) RESIDENTIAL TRENCH DEPTH SHALL BE 42" MAXIMUM.
(B) COMMERCIAL TRENCH DEPTH SHALL BE 48" MINIMUM.
2. RESIDENTIAL DUCT INSTALLATIONS SHALL BE A MINIMUM OF 36" BELOW FINAL GRADE.
3. ALL DUCT shall BE SCHEDULE 40 PVC
4. THE CONTRACTOR SHALL PASS A MANDREL WITH A DIAMETER 1/4 INCH LESS THAN THE INSIDE DIAMETER OF THE DUCT THROUGH EACH EMPTY DUCT RUN.
5. THE CONTRACTOR SHALL INSTALL A 1/4 INCH POLYPROPYLENE ROPE IN ALL EMPTY DUCTS.
6. ALL SCHEDULE 40 PVC SHALL BE DIRECT-BURIED. unless concrete encasement required.

TRENCH (PRIMARY AND SECONDARY)

FIG 6-5a

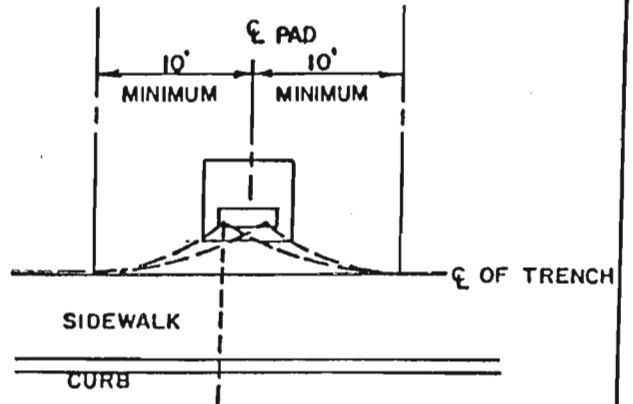
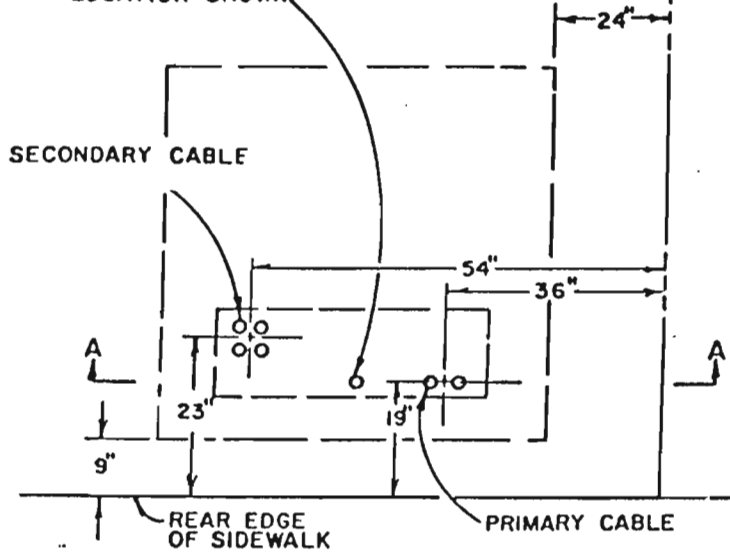


1. PVC SLEEVE TO TERMINATE AT REAR EDGE OF SIDEWALK (CENTERLINE OF CABLE TRENCH)
2. IF SLEEVE IS FOR FUTURE USE ONLY-CAP DUCT ENDS.
3. ON ALL STREET CROSSINGS, BOTH CURBS MUST BE MARKED WITH LETTER "E" CHISELED IN THE FACE OF EACH CURB ON C WITH STREET CROSSING. LETTER "E" TO BE 2" HIGH, 1/8" DEEP AND PAINTED RED.

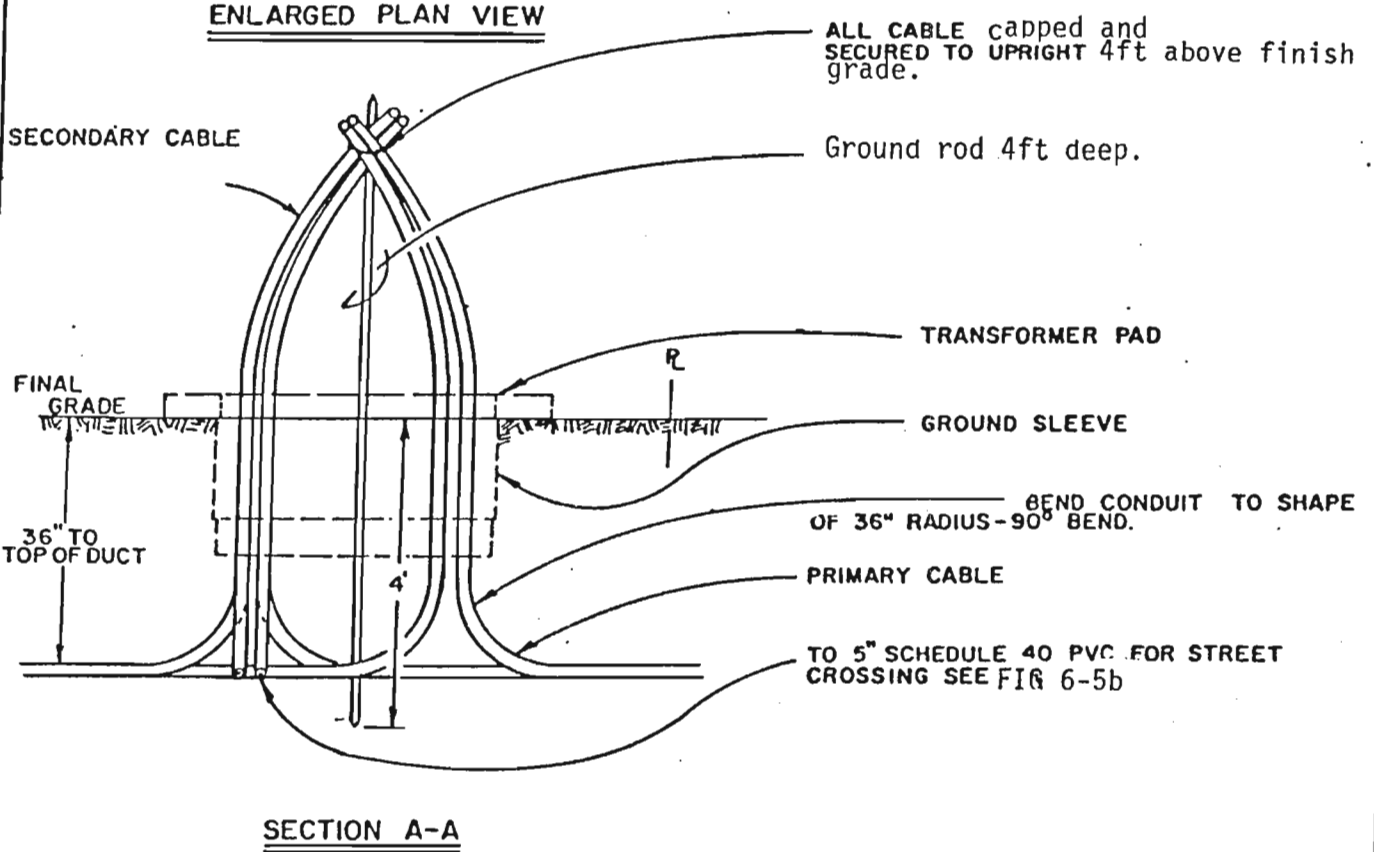
TRENCH STREET CROSSING

FIG 6-5b

CONTRACTOR TO INSTALL GROUND ROD FOR UPRIGHT SUPPORT AT LOCATION SHOWN.



NOTE: CABLE TRANSITION FROM TRENCH TO PAD SHALL BEGIN NO FURTHER THAN 10' FROM CENTERLINE OF PAD.



ALL CABLE capped and SECURED TO UPRIGHT 4ft above finish grade.

Ground rod 4ft deep.

TRANSFORMER PAD

GROUND SLEEVE

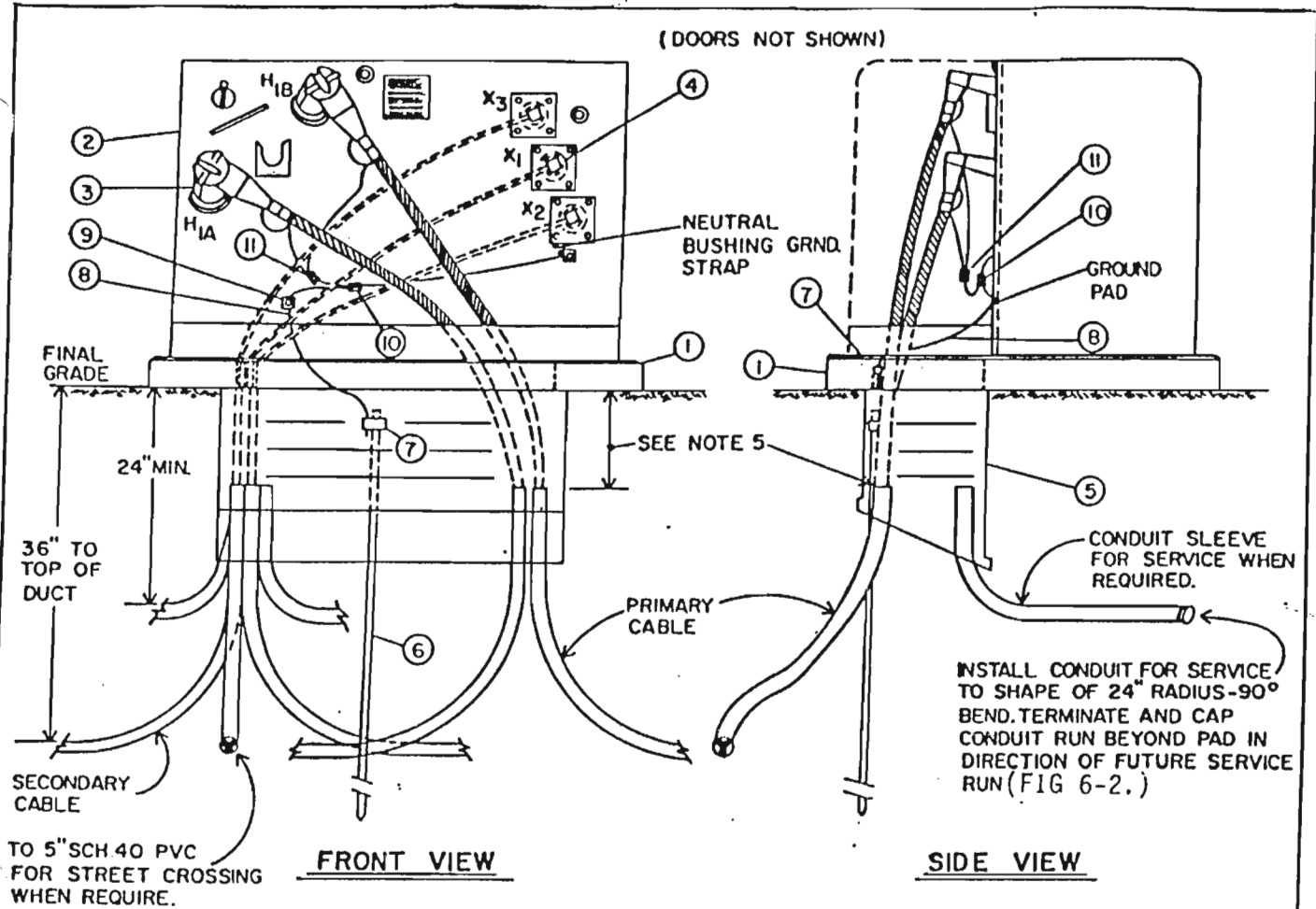
BEND CONDUIT TO SHAPE OF 36" RADIUS-90° BEND.

PRIMARY CABLE

TO 5" SCHEDULE 40 PVC FOR STREET CROSSING SEE FIG 6-5b

TRANSFORMER INSTALLATION

FIG 6-6a



INSTALLATION NOTES:

1. TRAIN PRIMARY CABLE AND CONCENTRIC NEUTRAL AS NECESSARY SO SUFFICIENT SLACK IS PROVIDED FOR ELBOW OPERATION AND PARKING WITHOUT DISCONNECTING THE NEUTRALS.
2. INSTALL SECONDARY CABLE BEHIND PRIMARY CABLE.
3. #4 CU GROUND WIRE TO BE CONTINUOUS FROM NEUTRAL BUSHING TANK GROUND THRU PRIMARY SIDE TANK GROUND TO GROUND ROD CLAMP.
4. USE HAREWARE FURNISHED WITH PAD TO ANCHOR TRANSFORMER.
5. REMOVE CONDUIT 9"-11" BELOW FINAL GRADE
6. EARTH AROUND GROUND SLEEVE AND BELOW TRANSFORMER PAD SHALL BE COMPACTED TO 90% OF Standard Proctor.
7. INSTALL CONDUIT SLEEVES FOR SERVICE WHEN TRANSFORMER FEEDS HOUSES DIRECTLY. CONTRACTOR SHALL COORDINATE EXTENSION AND TERMINATION OF SERVICE TO TRANSFORMER WITH CITY ELECTRIC DEPARTMENT.

TRANSFORMER WIRING CONNECTIONS
FIG 6-6b

MATERIAL LIST

ITEM	STOCK NO.	FILE NO.	MATERIAL DESCRIPTION	QUANTITY												UNIT	DETAIL NO.
				A	B	C	D	E	F	G	H						
1	108-340	196	PAD, 1Ø TRANSFORMER	1	1	1	1	1	1	1	1	1	1	1	EA.	6-2	
2	*		TRANSFORMER, 1Ø PADMOUNT - 25 KVA	1				1							EA.		
	*		TRANSFORMER, 1Ø PADMOUNT - 50 KVA	1					1						EA.		
	*		TRANSFORMER, 1Ø PADMOUNT - 75 KVA			1						1			EA.		
	*		TRANSFORMER, 1Ø PADMOUNT - 100 KVA				1						1		EA.		
3	237-199	680	ELBOW, 15 KV LOADBREAK	2	2	2	2	1	1	1	1	1	1	1	EA.	6-4	
4	241-719	946	CONNECTOR, 6 COND. SEC. (6-350MCM)	3	3	3	3	3	3	3	3	3	3	3	EA.	6-14	
	241-723	1003	CONNECTOR, 6 COND. SEC. (6-500MCM)					3						3	EA.	6-14	
5	108-346	162	GROUND SLEEVE	1	1	1	1	1	1	1	1	1	1	1	EA.	6-3	
6	191-025	387	GROUND ROD, 5/8" x 8'	1	1	1	1	1	1	1	1	1	1	1	EA.		
7	241-487	909	CLAMP, COPPERCLAD GROUND ROD	1	1	1	1	1	1	1	1	1	1	1	EA.		
8	101-358	54	WIRE, #4 Cu. SOFT DRAWN	4	4	4	4	4	4	4	4	4	4	4	FT.		
9	241-811	976	CLAMP, TRANSFORMER TANK GROUND	2	2	2	2	2	2	2	2	2	2	2	EA.		
10	226-589	548	CONNECTOR, Cu. (#4 - 1/0)	1	1	1	1	1	1	1	1	1	1	1	EA.		
11	226-588	549	CONNECTOR, Cu. (1/0 - 1/0)	1	1	1	1	1	1	1	1	1	1	1	EA.		
12	237-194	676	CAP, INSULATED PROTECTIVE							1	1	1	1	1	EA.	6-6	

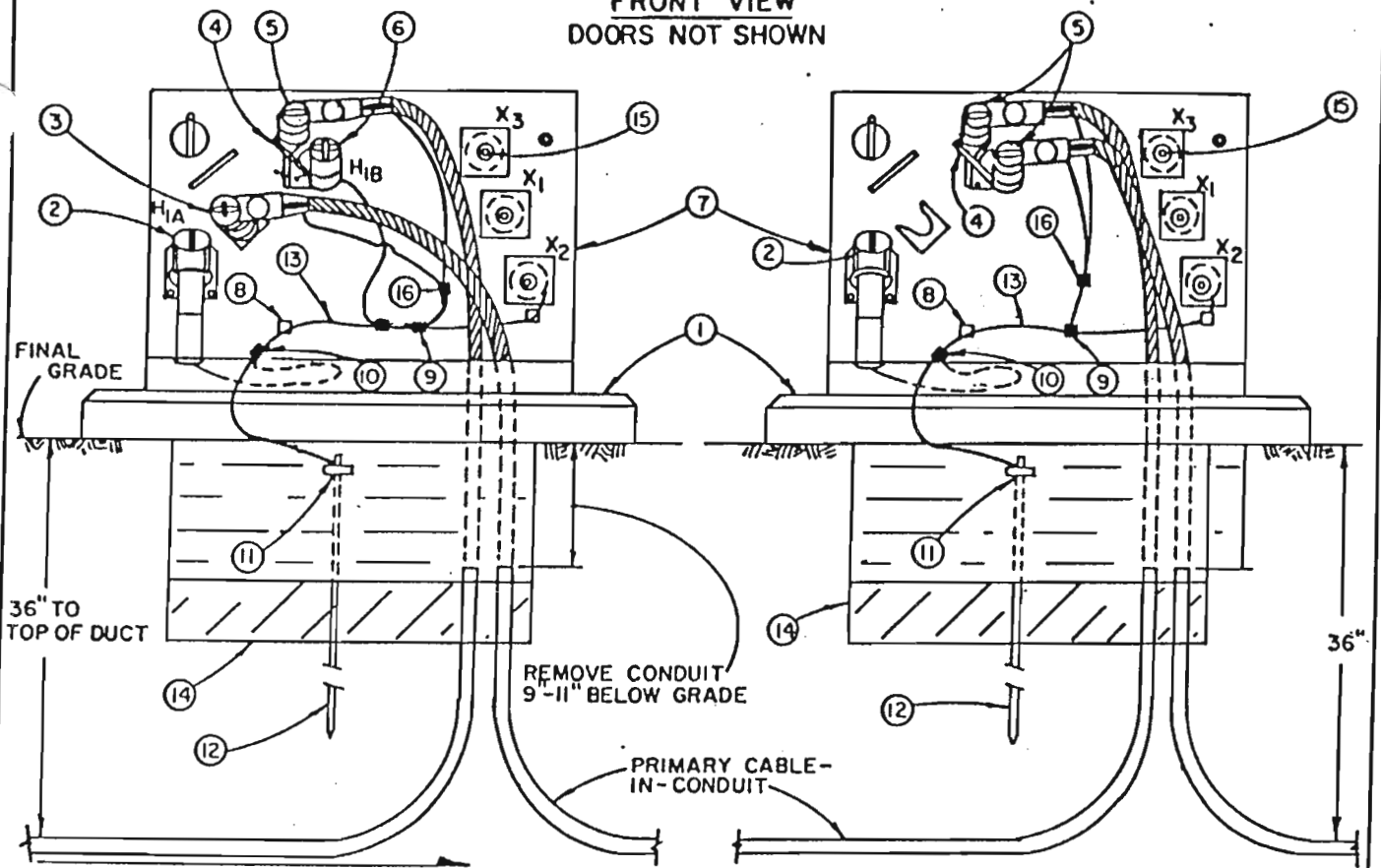
* STOCK NO. FOR THIS ITEM NOT AVAILABLE

MATERIAL NOTES

- A. 25 KVA LOOP FEED
- B. 50 KVA LOOP FEED
- C. 75 KVA LOOP FEED
- D. 100 KVA LOOP FEED
- E. 25 KVA RADIAL FEED
- F. 50 KVA RADIAL FEED
- G. 75 KVA RADIAL FEED
- H. 100 KVA RADIAL FEED

TRANSFORMER MATERIAL LIST
FIG 6-6b CONT

FRONT VIEW
DOORS NOT SHOWN



CONFIGURATION "A"

TRANSFORMER AT THE NORMALLY OPEN POINT OF THE LOOP.

CONFIGURATION "B"

LAST TRANSFORMER THAT ENERGIZES THE CABLE FEEDING TO THE STANDOFF INSULATOR LOCATED IN CONFIGURATION "A" AT THE NORMALLY OPEN POINT OF THE LOOP.

INSTALLATION NOTES:

1. BOTH TRANSFORMER CONFIGURATIONS WITH M.O.V. ELBOW SURGE ARRESTOR SHALL BE ENERGIZED AT H_{1B} BUSHINGS.
2. TRAIN PRIMARY CABLE & CONCENTRIC NEUTRAL AS NECESSARY SO SUFFICIENT SLACK IS PROVIDED FOR ELBOW OPERATION AND PARKING WITHOUT DISCONNECTING THE NEUTRALS.
3. INSTALL SECONDARY CABLE BEHIND PRIMARY CABLE.
4. NO. 4 Cu GROUND WIRE TO BE CONTINUOUS FROM NEUTRAL BUSHING TANK GROUND THRU PRIMARY SIDE TANK GROUND TO GROUND ROD CLAMP.
5. USE HARDWARE FURNISHED WITH PAD TO ANCHOR TRANSFORMER.
6. REMOVE CONDUIT 9"-11" BELOW FINAL GRADE (SHOWN ABOVE).
7. EARTH AROUND GROUND SLEEVE AND BELOW TRANSFORMER PAD SHALL BE COMPACTED TO 90% OF
8. INSTALL CONDUIT SLEEVES FOR SERVICES WHEN TRANSFORMER FEEDS HOUSES DIRECTLY. CONTRACTOR SHALL COORDINATE EXTENSION AND TERMINATION OF SERVICE TO TRANSFORMER WITH CITY ELECTRIC DEPARTMENT.
9. SEE FIG 6-6b FOR SECONDARY CONDUCTOR INSTALLATION CONFIGURATION.

TRANSFORMER WIRING CONNECTIONS
OPEN POINT IN LOOP

FIG 6-6c

MATERIAL LIST

ITEM	STOCK NO.	FILE NO.	MATERIAL DESCRIPTION	QUANTITY													UN.	DETAIL NO.
				A	B	C	D	E	F	G	H							
1	108-340	196	PAD, 1Ø TRANSFORMER	1	1	1	1	1	1	1	1	1	1	1	1	EA.	6-2	
2	151-094	321	ARRESTOR, 15 KV M.O.V. ELBOW SURGE	1	1	1	1	1	1	1	1	1	1	1	1	EA.		
3	237-228	707	INSULATOR, 15 KV STANDOFF	1	1	1	1	1	1	1	1	1	1	1	1	EA.	6-5	
4	237-791	793	INSERT, DUAL BUSHING FEEDTHRU	1	1	1	1	1	1	1	1	1	1	1	1	EA.		
5	237-199	680	ELBOW, 15 KV LOADBREAK	2	2	2	2	2	2	2	2	2	2	2	2	EA.	6-4	
6	237-194	676	CAP, INSULATED PROTECTIVE	1	1	1	1	1	1	1	1	1	1	1	1	EA.	6-6	
7	*		TRANSFORMER, 1Ø PADMOUNT-25 KVA	1												EA.		
	*		TRANSFORMER, 1Ø PADMOUNT-50 KVA	1												EA.		
	*		TRANSFORMER, 1Ø PADMOUNT-75 KVA													EA.		
	*		TRANSFORMER, 1Ø PADMOUNT-100 KVA													EA.		
8	241-811	976	CLAMP, TRANSFORMER TANK GROUND	2	2	2	2	2	2	2	2	2	2	2	2	EA.		
9	226-589	548	CONNECTOR, Cu. (#4-1/0)	1	1	1	1	1	1	1	1	1	1	1	1	EA.		
10	226-585	545	CONNECTOR, Cu. (#4-#4)	2	2	2	2	2	2	2	2	2	2	2	2	EA.		
11	241-487	909	CLAMP, COPPERGLAD GROUND ROD	1	1	1	1	1	1	1	1	1	1	1	1	EA.		
12	191-025	387	GROUND ROD, 5/8" x 8'	1	1	1	1	1	1	1	1	1	1	1	1	EA.		
13	101-358	54	WIRE, #4 Cu. SOFT DRAWN	4	4	4	4	4	4	4	4	4	4	4	4	FT.		
14	108-346	162	GROUND SLEEVE	1	1	1	1	1	1	1	1	1	1	1	1	EA.	6-3	
15	241-719	945	CONNECTOR, 6 COND. SEC. (#6-350MCM)	3	3	3	3	3	3	3	3	3	3	3	3	EA.	6-14	
	241-723	1003	CONNECTOR, 6 COND. SEC. (#6-500MCM)													EA.	6-14	
16	226-588	549	CONNECTOR, Cu. (1/0 - 1/0)	1	1	1	1	1	1	1	1	1	1	1	1	EA.		

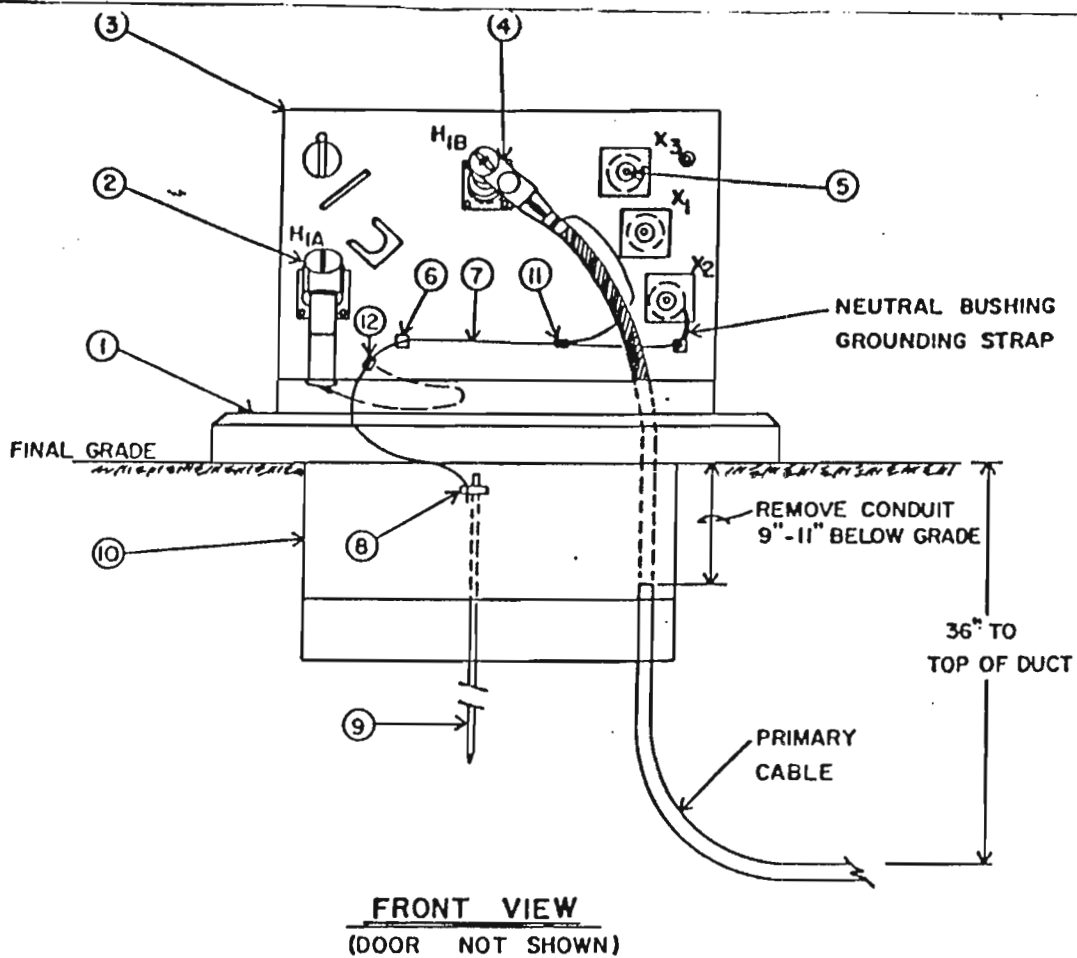
* STOCK NO. FOR THIS ITEM NOT AVAILABLE

MATERIAL NOTES

- A. 25 KVA CONFIGURATION A
- B. 50 KVA CONFIGURATION A
- C. 75 KVA CONFIGURATION A
- D. 100 KVA CONFIGURATION A

- E. 25 KVA CONFIGURATION B
- F. 50 KVA CONFIGURATION B
- G. 75 KVA CONFIGURATION B
- H. 100 KVA CONFIGURATION B

TRANSFORMER MATERIAL LIST
FIG 6-6c CONT



INSTALLATION NOTES:

1. TRANSFORMER AT END OF RADIAL WITH M.O.V. ELBOW SURGE ARRESTOR SHALL BE ENERGIZED AT H_{1B} BUSHING.
2. TRAIN PRIMARY CABLE AND CONCENTRIC NEUTRAL AS NECESSARY SO SUFFICIENT SLACK IS PROVIDED FOR ELBOW OPERATION AND PARKING WITHOUT DISCONNECTING THE NEUTRALS.
3. INSTALL SECONDARY CABLE BEHIND PRIMARY CABLE.
4. #4 CU GROUND WIRE TO BE CONTINUOUS FROM NEUTRAL BUSHING TANK GROUND THRU PRIMARY SIDE TANK GROUND TO GROUND ROD CLAMP.
5. USE HARDWARE FURNISHED WITH PAD TO ANCHOR TRANSFORMER.
6. REMOVE CONDUIT 9"-11" BELOW FINAL GRADE (SHOWN ABOVE).
7. EARTH AROUND GROUND SLEEVE AND BELOW TRANSFORMER PAD SHALL BE COMPACTED TO 90% OF Standard Proctor.
8. INSTALL CONDUIT SLEEVES FOR SERVICES WHEN TRANSFORMER FEEDS HOUSES DIRECTLY. CONTRACTOR SHALL COORDINATE EXTENSION AND TERMINATION OF SERVICE TO TRANSFORMER WITH CITY ELECTRIC DEPARTMENT.
9. SEE FIG 6-6b FOR SECONDARY CONDUCTOR INSTALLATION CONFIGURATION.

TRANSFORMER WIRING CONNECTIONS
END OF RADIAL
FIG 6-6d

MATERIAL LIST

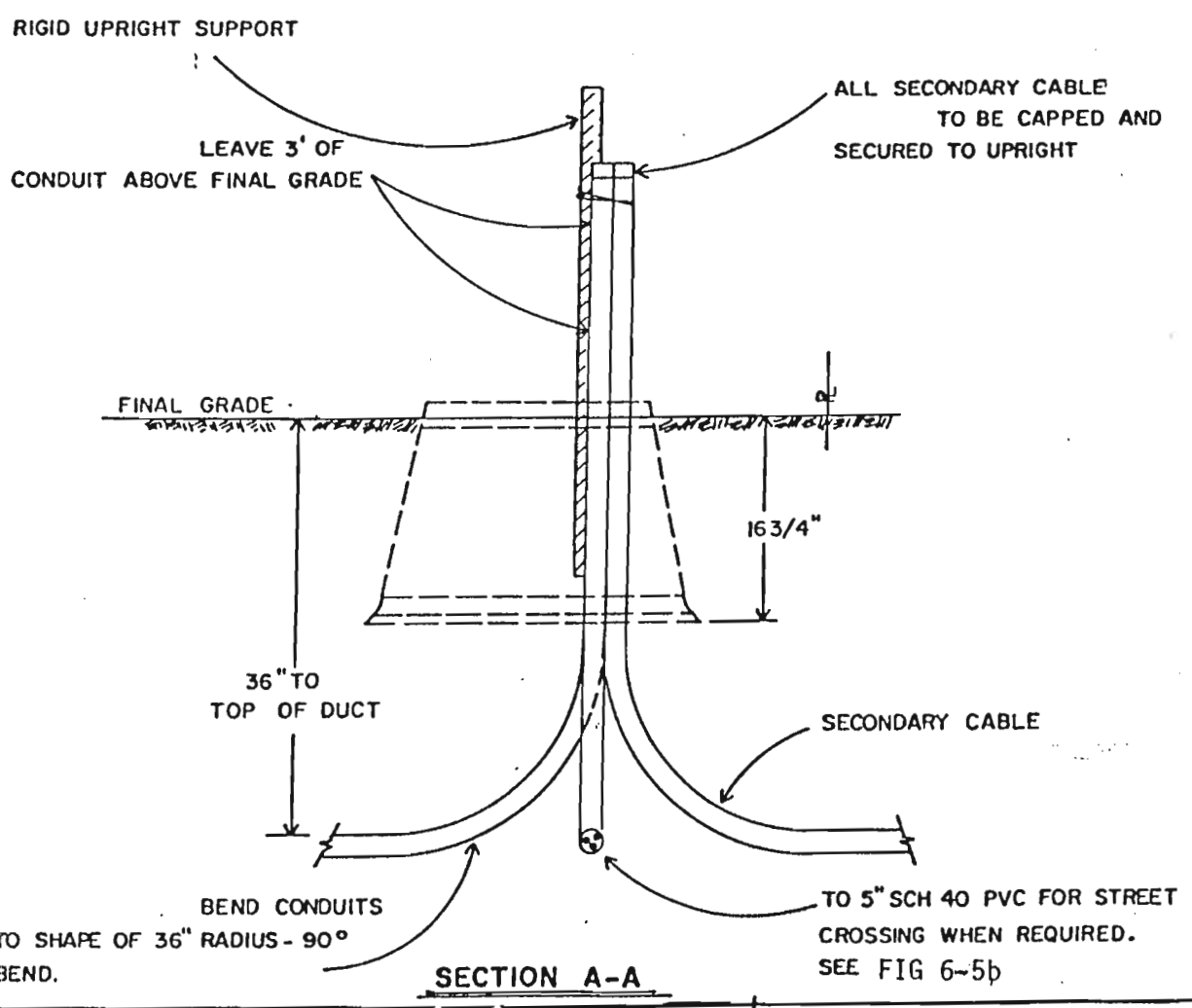
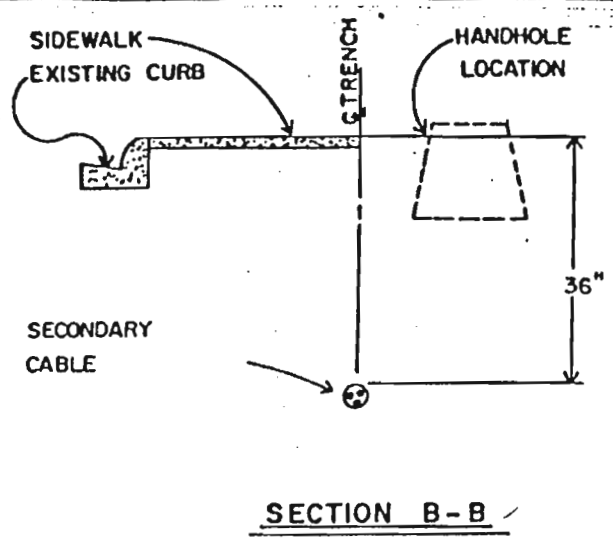
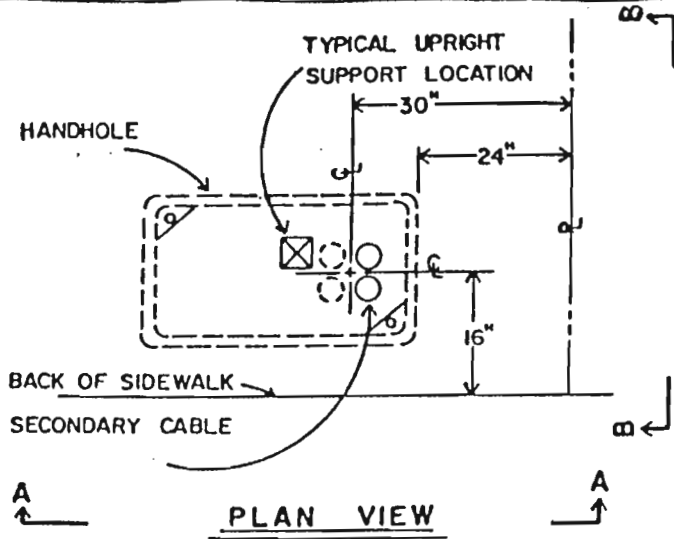
ITEM	STOCK NO.	FILE NO.	MATERIAL DESCRIPTION	QUANTITY				UNIT	DETAIL NO.
				A	B	C	D		
1	108-340	196	PAD, 1Ø TRANSFORMER	1	1	1	1	EA.	6-2
2	151-094	321	ARRESTOR, 15 KV M.O.V. ELBOW SURGE	1	1	1	1	EA.	
3	*		TRANSFORMER, 1Ø PADMOUNT - 25 KVA	1				EA.	
	*		TRANSFORMER, 1Ø PADMOUNT - 50 KVA		1			EA.	
	*		TRANSFORMER, 1Ø PADMOUNT - 75 KVA			1		EA.	
	*		TRANSFORMER, 1Ø PADMOUNT - 100 KVA				1	EA.	
4	237-199	680	ELBOW, 15 KV LOADBREAK	1	1	1	1	EA.	6-4
5	241-719	946	CONNECTOR, 6 COND. SEC. (16 - 350MCM)	1	1	1	1	EA.	6-14
	241-723	1003	CONNECTOR, 6 COND. SEC. (16 - 500MCM)				1	EA.	6-14
6	241-811	976	CLAMP, TRANSFORMER TANK GROUND	2	2	2	2	EA.	
7	101-358	54	WIRE, 4 Cu. SOFT DRAWN	4	4	4	4	FT.	
8	241-487	909	CLAMP, COPPERCLAD GROUND ROD	1	1	1	1	EA.	
9	191-025	387	GROUND ROD, 5/8" x 8'	1	1	1	1	EA.	
10	108-346	162	GROUND SLEEVE	1	1	1	1	EA.	6-3
11	226-589	548	CONNECTOR, Cu. (4 - 1/0)	1	1	1	1	EA.	
12	226-585	545	CONNECTOR, Cu. (4 - 4)	1	1	1	1	EA.	

* STOCK NO. FOR THIS ITEM NOT AVAILABLE

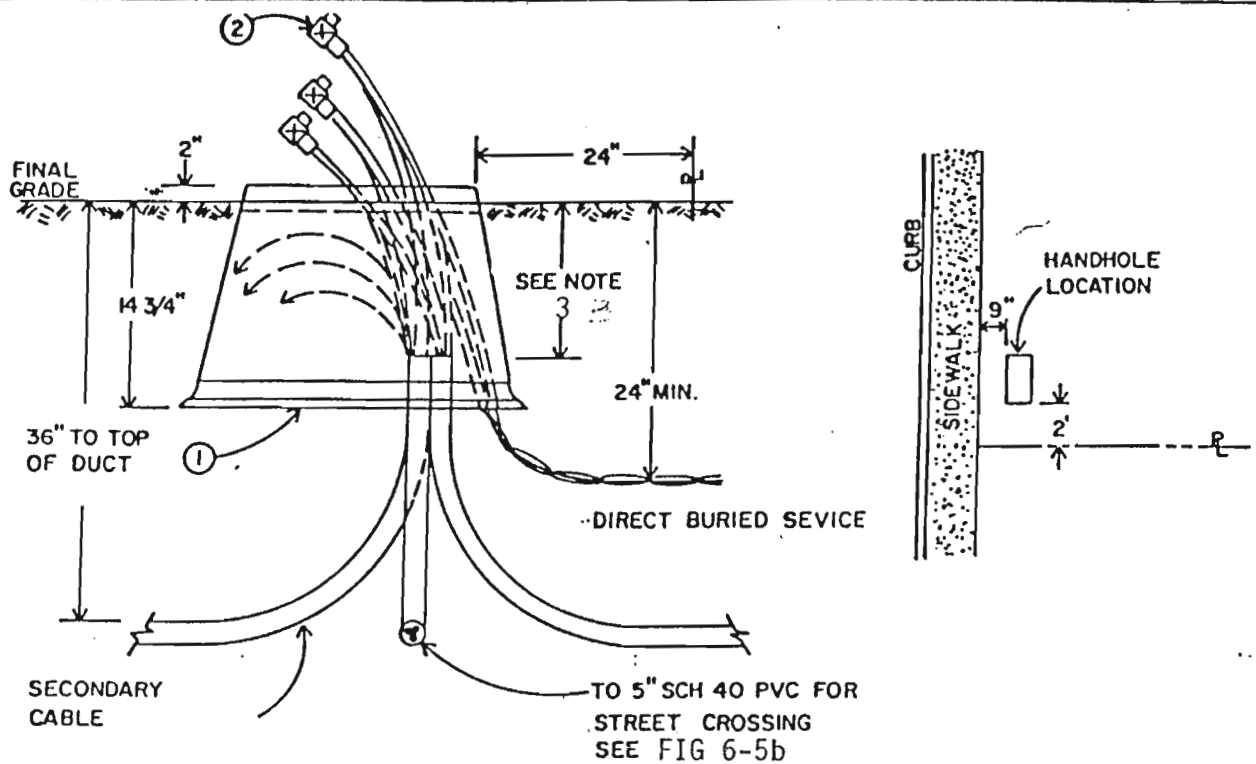
MATERIAL NOTES

- A. 25 KVA TRANSFORMER
- B. 50 KVA TRANSFORMER
- C. 75 KVA TRANSFORMER
- D. 100 KVA TRANSFORMER

TRANSFORMER MATERIAL LIST
FIG 6-6d CONT



HANDHOLE INSTALLATION
FIG 6-7 a



INSTALLATION NOTES:

1. TOP OF HANDHOLE TO BE 2" ABOVE FINAL GRADE ON ALL SIDES.
2. EARTH AROUND HANDHOLE TO BE FIRMLY TAMPED.
3. REMOVE CONDUIT 10"-12" BELOW FINAL GRADE.
4. CONTRACTOR TO RUN SERVICE TO OUTSIDE EDGE OF HANDHOLE AND LEAVE 3 FEET OF CABLE COILED ABOVE GRADE FOR TERMINATION

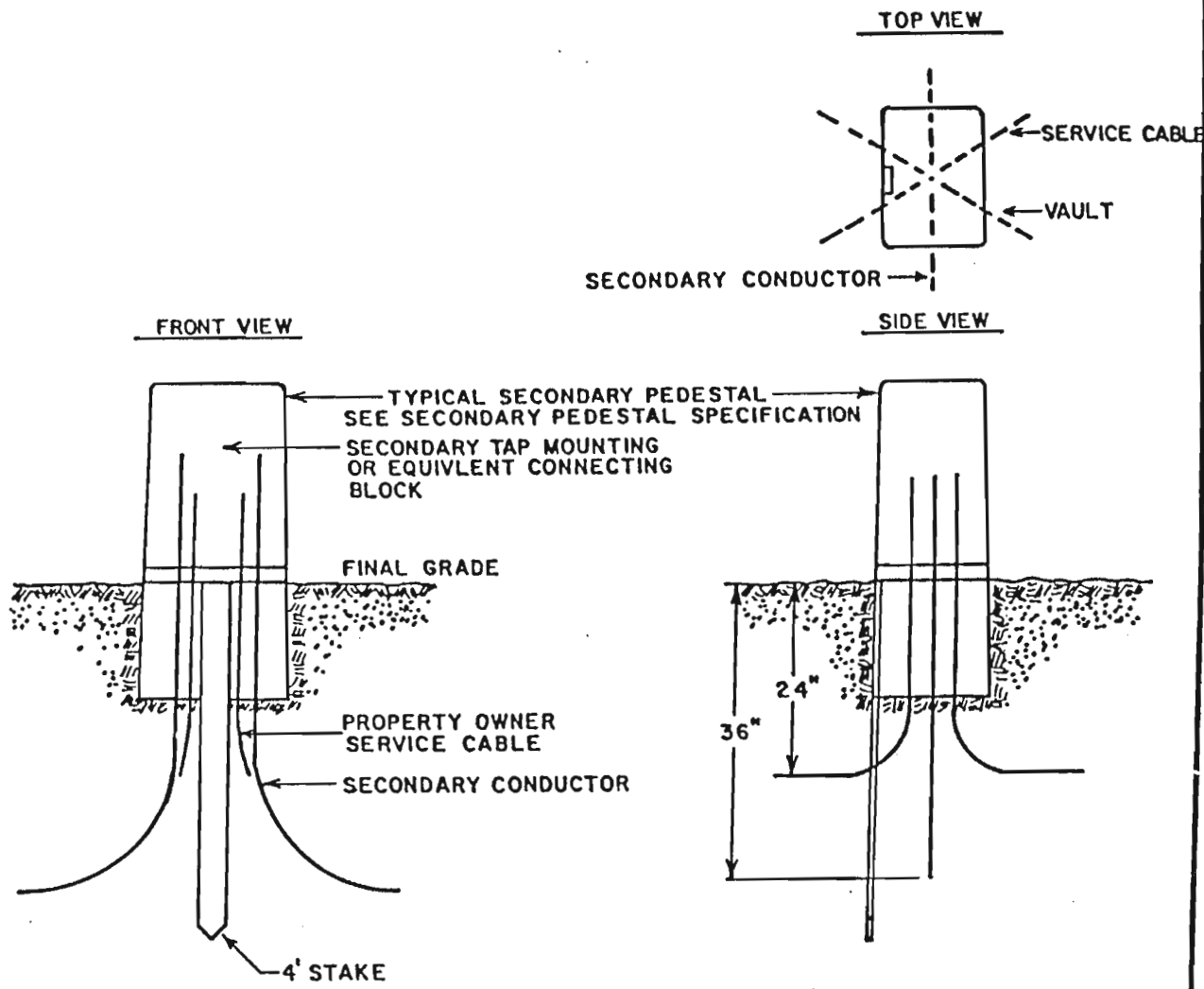
MATERIAL LIST

ITEM	STOCK NO	FILE NO.		QUANTITY		UNIT	DETAIL NO.
				A	B		
1	237-243	719	HANDHOLE, U.G. SECONDARY	1	1	EA	6-16
2	241-721	948	CONNECTOR, U.G. SEC-4 CONDUCTOR	3		EA	6-12
2	241-722	999	CONNECTOR, U.G. SEC-6 CONDUCTOR		3	EA	6-12

MATERIAL NOTES:

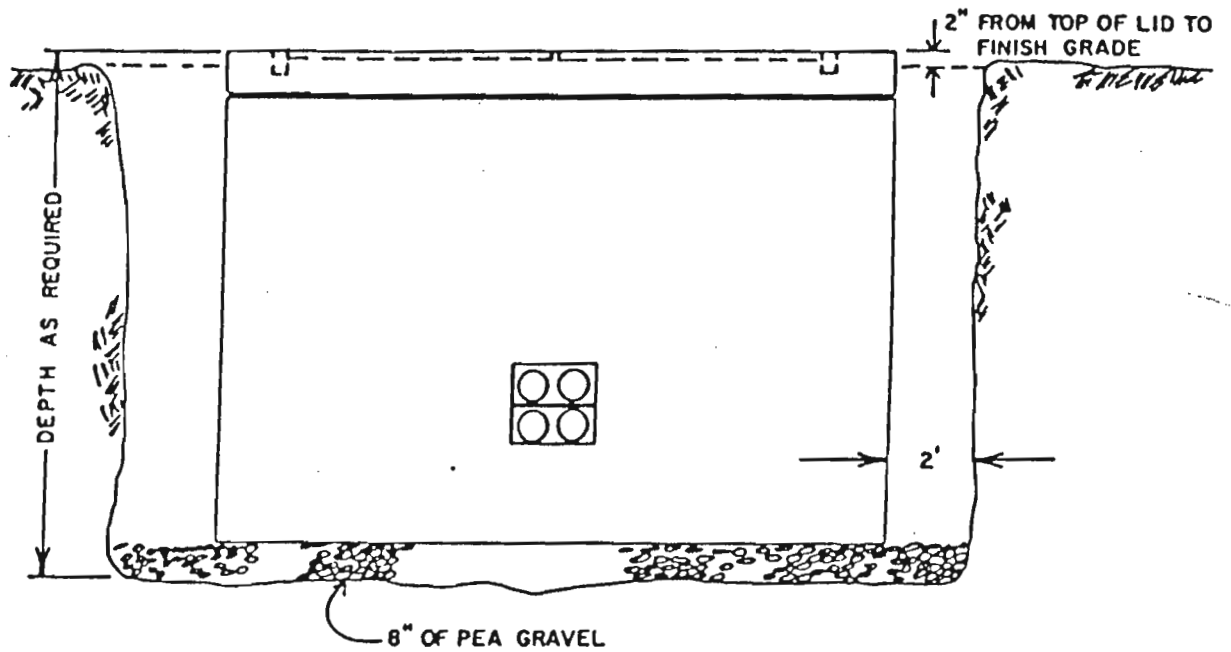
- A. 4 CONDUCTOR CONNECTOR.
- B. 6 CONDUCTOR CONNECTOR.

HANDHOLE WIRING CONNECTIONS
FIG 6-7b



NOTE:
DIMENSIONS SHOWN ARE MINIMUM.

PEDESTAL INSTALLATION
FIG 6-8



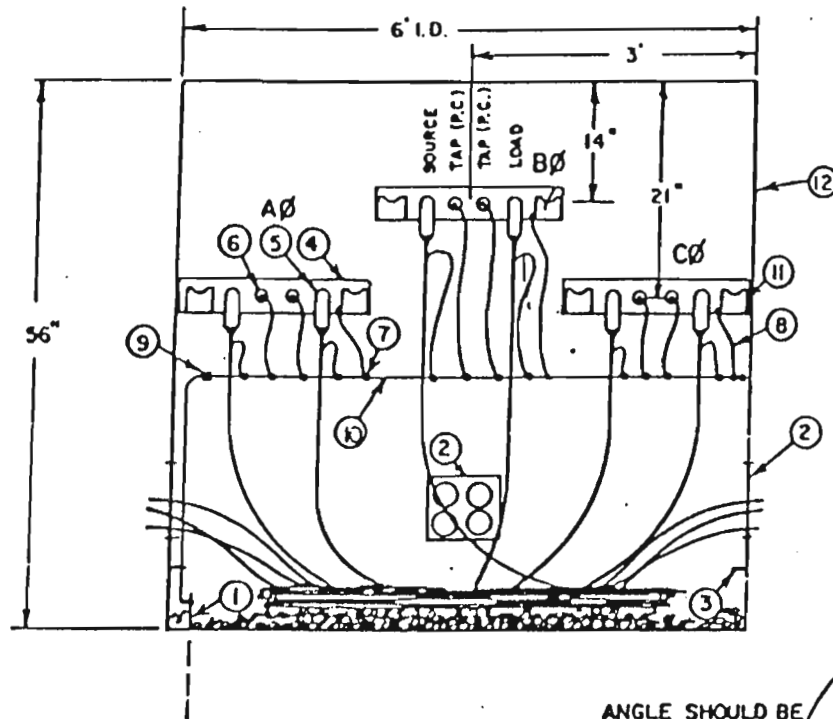
TO BE EXCAVATED 2' AROUND ALL SIDES TO ENSURE PROPER ROOM FOR TAMPING.

*FINAL COMPACTION SHOULD BE TO 90% OF

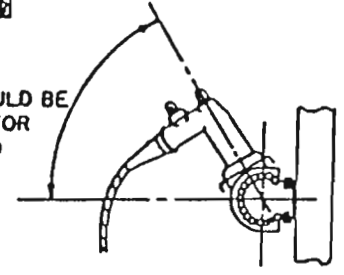
- NOTE: 1. THIS SPECIFICATION APPLIES TO THE INSTALLATION OF ALL VAULTS.
2. IF VAULT IS TO BE PLACED IN SIDEWALK, ALONG CURB OR OTHER PAVED AREAS, KEEP TOP OF LID LEVEL WITH FINISHED GRADE.

VAULT INSTALLATION

FIG 6-9a



ANGLE SHOULD BE SUITABLE FOR EASY FIELD OPERATION



MOUNTING DETAIL

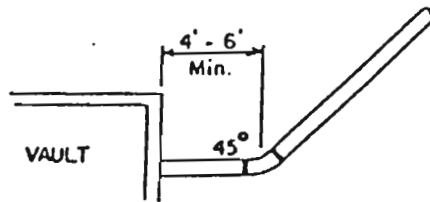
NOTE:

1. THIS IS A TYPICAL INSTALLATION TO BE USED WITH 2, 3, AND 4 POSITION MODULES - 200 AMP
2. IF 45° ANGLE CONDUIT BENDS ARE CALLED FOR OR NEEDED AS DUCT LEAVES THE VAULT, A MINIMUM STRAIGHT LENGTH OF 4' TO 6' OF CONDUIT SHALL BE INSTALLED PRIOR TO TURNING THE ANGLE.
3. A MINIMUM OF 12' OF CABLE PER PHASE SHALL BE LOOPED IN VAULT
4. FOR 1Ø MODULE INSTALLATION, PLACE MODULE AT DESIGNATED LOCATION SHOWN ABOVE FOR THE PARTICULAR PHASE USED. (EX. - CØ MODULE SHOULD BE MOUNTED ON RIGHT SIDE OF WALL.)

VAULT WIRING CONNECTIONS
FIG 6-9b

QUANTITIES : A = 2 POSITION MODULE
 B = 3 POSITION MODULE
 C = 4 POSITION MODULE

ITEM	QTY			DETAIL NO.	MATERIAL DESCRIPTION
	A	B	C		
1	1	1	1		5/8" x 8" GROUND ROD AND GROUND ROD CLAMP. 4" TO 6" FROM WALL, LOCATION AS SHOWN. (SEE GROUND ROD SPEC.)
2	1	1	1		4-4" DUCT TERMINATORS, EACH SIDE
3	1	1	1		PULLING EYES BELOW EACH TERMINATOR
4	1	1	1	6-7	15KV MODULE, 200a, AS REQUIRED. (SEE MODULE SPECIFICATION.)
5	2	3	4	6-4	8.3/14.4 KV ELBOW, 200a (SEE ELBOW SPECIFICATION)
6				6-6	15KV PROTECTIVE CAP, 200a (SEE CAP SPECIFICATION)
7	13	13	13		Cu. COMPRESSION CONNECTOR
8	20'	20'	20'		#2 SOLID Cu. GROUND WIRE TO MODULES
9	4	4	4		CAST CLAMP TO HOLD GROUND WIRE TO WALL OF VAULT
10	20'	20'	20'		GROUND WIRE (SEE Cu GROUND WIRE SPECIFICATION)
11	6	6	6		RAWL STUD 1/2" x 2 3/4" FOR MODULE SUPPORT
12	1	1	1		4' x 6' x 4'-8" ELECTRIC VAULT (SEE VAULT SPEC.)



CONDUIT DETAIL
 top view.

VAULT MATERIAL LIST
 FIG 6-9b CONT

WARNING TAPE

Application: Buried cable installation

Description:

<u>Stock No.</u>	<u>Color</u>	<u>Roll Width</u>	<u>Roll Length</u>	<u>Polyethylene Thickness</u>	<u>Legend</u>
237-185	Red or yellow	6"	1,000'	.004"	"Buried Electric Line Below"

Manufacturers Data:

Stock No.

237-185

Catalogue No.

AI-6100-RE (Alarmoline)

CAUTION ELECTRIC LINE BURIED BELOW CAUTION EV
CALL 231-2417 EASTERN ELECTRIC CO CALL 231-2417 EASTERN ELECTRIC CO.

GROUND SLEEVES

Application: Cable training under single phase padmounted transformers.

Description:

<u>Stock No.</u>	<u>Overall O.D. (L x W x H)</u>	<u>Pad Opening Required</u>
108-346	26" x 12" x 25 1/4"	12" x 26"

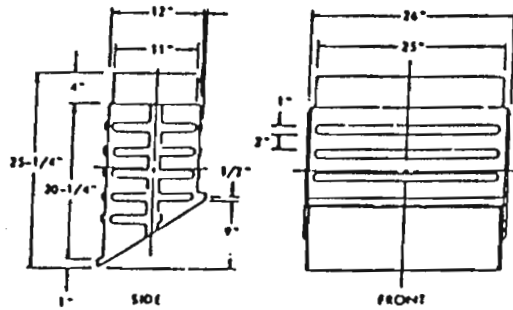
Manufacturers Data:

Stock No.

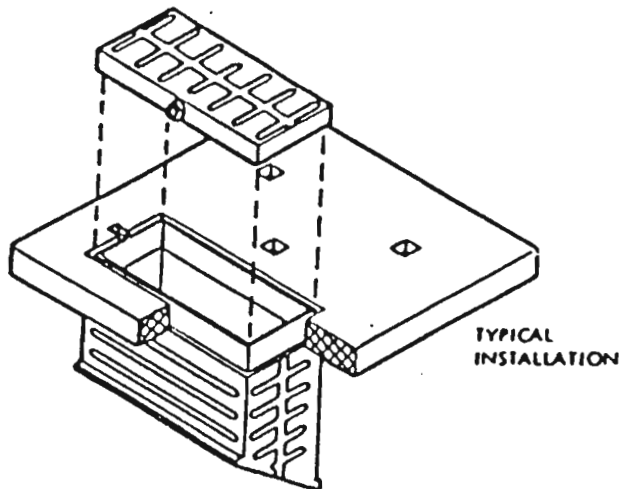
108-346

Catalogue No.

VS-1 (Thermodynamics Corp.)



VAULT-SCOOP



TYPICAL
INSTALLATION

DETAIL 6-3

LOADBREAK ELBOWS (200 amp)

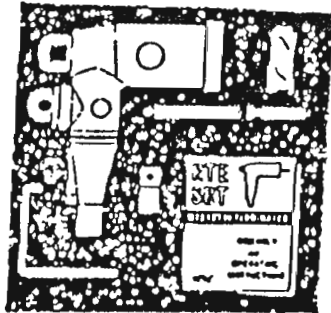
Application: Termination of 15KV underground primary cable (Note: capacitive test point requires special potential indicator)

Description: Use copper top wire connectors only.

<u>Stock No.</u>	<u>Voltage Rating</u>	<u>Cable Conductor</u>	<u>Insulation O.D.(±.030)</u>	<u>Test Point</u>	<u>Burndy Die Index</u>
237-200	14.4KV	#2 - 7	0.695"	Yes	BG,243
237-199	14.4KV	1/0 - 19	0.770"	Yes	BG,243
237-197	14.4KV	2/0 - 19	0.815"	Yes	BG,243
237-400	14.4KV	4/0 - 19	0.920"	Yes	247

Manufacturers Data:

<u>Stock No.</u>	<u>Catalogue No.</u>
237-200	2604600B32 MA RTE 166LRR-FAB-220 (Elastimold)
237-199	2604600B33 MA RTE 166LRR-FG-240 (Elastimold)
237-197	2604600B49 MA RTE 166LRR-FG-250 (Elastimold)
237-400	2604600B51 MA RTE 166LRR-GAB-270 (Elastimold)



STANDOFF INSULATORS

Application: URD Systems

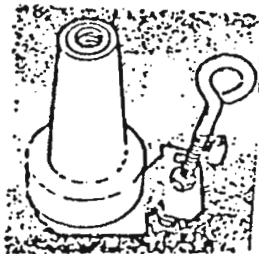
Description:

<u>Stock No.</u>	<u>Voltage</u>	<u>Current</u>	<u>Type</u>
237-228	15KV	200 amp	Parking
237-196	15KV	600 amp	Parking
237-232	15KV	200 amp	Grounding

Manufacturers Data:

Stock No.

237-228



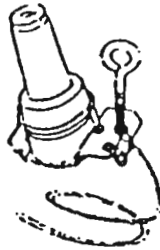
Catalogue No.

2625063B01M (RTE)
160 SOP (Elastimold)

237-196

2604791B01M (RTE)

237-232



2637158B01M (RTE)

INSULATED PROTECTIVE CAPS

Application: Covering spare bushings

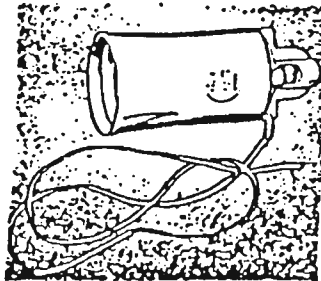
Description:

<u>Stock No.</u>	<u>Voltage</u>	<u>Basic Impulse Level</u>	<u>Bushing Current Rating</u>	<u>Grounding Lead</u>
237-194	15 KV	95 KV	200 amp	Yes
237-311	15 KV	95 KV	600 amp	Yes

Manufacturers Data:

Stock No.

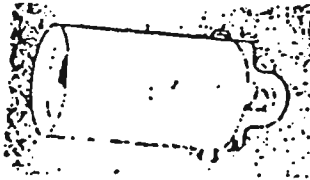
237-194



Catalogue No.

2603711A12M (RTE)
160DRG (Elastimold)

237-311



2625041A01M (RTE)

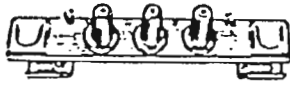
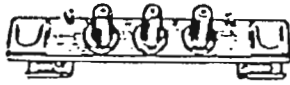
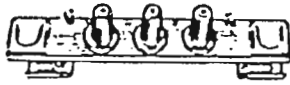


MODULES

Application: Underground primary distribution

Description:

<u>Stock No.</u>	<u>Amperage</u>	<u>Voltage</u>	<u>Positions</u>	<u>Mounting</u>
237-217	200	15KV	3	Bracket included
237-220	600	15KV	3	Bracket included
237-218	200	15KV	4	Bracket included
237-214	600	15KV	4	Bracket included

Manufacturers Data:

<u>Stock No.</u>		<u>Catalogue No.</u>
237-217		2637172B02MG (RTE) 163J3R (Elastimold)
237-220		2604670B02M (RTE)
237-218		2637172B03MG (RTE) 163J4R (Elastimold)
237-214		2604670B03M (RTE)

FAULT INDICATORS

Application: Underground primary distribution

Description:

<u>Stock No.</u>	<u>Type</u>	<u>Trip Setting</u>	<u>Reset</u>	<u>Cable</u>	<u>Elbow</u>	<u>Cable Diam. Over Semi-con Jacket (± .050 tol.)</u>
237-502	cable	800 amp	3 amp	350	N/A	1.200 in.
237-502	cable	800 amp	3 amp	500	N/A	1.330 in.
237-503	cable	800 amp	3 amp	750	N/A	1.520 in.
237-504	test point	300 amp	5KV	1/0	200 amp	0.850 in.
237-504	test point	300 amp	5KV	4/0	200 amp	1.000 in.

Manufacturers Data:

Stock No.

Catalogue No.

237-502

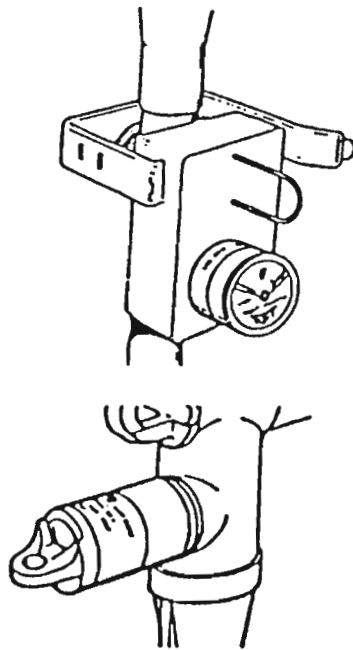
8137268B04M (RTE)
1514RH-8A3-NTB (Fisher Pierce)

237-503

8137268B04ML (RTE)
1514RH-8A3-NTB (Fisher Pierce)

237-504

8125605A01M (RTE)



DETAIL 6-8

MOLDED RUBBER CABLE TERMINATIONS

Application: Outdoor and indoor primary cable terminations for use on copper and aluminum shielded and concentric neutral type cables.

Description:

<u>Stock No.</u>	<u>Voltage</u>	<u>Phase Conductor</u>	<u>Insulation O.D. (+.030)</u>	<u>Aerial Connector Type Needed</u>
237-187	25 kv	#2-7 Str.	0.695"	Crimp
237-198	25 kv	1/0-19 Str.	0.770"	Crimp
237-201	25 kv	2/0-19 Str.	0.815"	Crimp
237-191	25 kv	4/0-19 Str.	0.920"	Crimp
237-212	15 kv	350-37 Str.	1.080"	2-Hole Spade
237-753	15 kv	500-37 Str.	1.210"	2-Hole Spade
237-740	15 kv	750-61 Str.	1.400"	2-Hole Spade

Manufacturers Date:

Stock No.

237-187

237-198

237-201

237-191

237-212

237-753

237-740



Catalogue No.

16THG-FAB-0220-4 (Elastimold)

16THG-FG-0240-4 (Elastimold)

16THG-GA-0250-4 (Elastimold)

16THG-GB-0270-4 (Elastimold)

35MTG-HAB-3504112 (Elastimold)

35MTG-HJ-5004222 (Elastimold)

35MTG-JB-7504222 (Elastimold)

DETAIL 6-9

COLD SHRINK CABLE TERMINATIONS

Application: Outdoor and indoor primary cable terminations for use on copper and aluminum concentric neutral type cables.

Description:

<u>Stock No.</u>	<u>Voltage</u>	<u>Phase Conductor</u>	<u>Insulation O.D. (+.030)</u>	<u>Aerial Connector Type Needed</u>
237-743	15 kv	#2-7 Str.	0.695"	Crimp
237-744	15 kv	1/0-19 Str.	0.770"	Crimp
237-746	15 kv	2/0-19 Str.	0.815"	Crimp
237-748	15 kv	4/0-19 Str.	0.920"	Crimp
237-749	15 kv	350-37 Str.	1.080"	2-Hole Spade
237-754	15 kv	500-37 Str.	1.210"	2-Hole Spade
237-755	15 kv	750-61 Str.	1.400"	2-Hole Spade

Manufacturers Data:

<u>Stock No.</u>	<u>Catalogue No.</u>
237-743	5601-2 (3M)
237-744	5601-1/0 (3M)
237-746	5601-2/0 (3M)
237-748	5601-4/0 (3M)
237-749	5602-40156 (3M)
237-754	5602-40166 (3M)
237-755	5602-40172 (3M)



DETAIL 6-10

EQUIPMENT BRACKETS

Application: URD Riser Poles (three phase)

Description:

<u>Stock No.</u>	<u>Type</u>	<u>Length</u>	<u>Pole Clearance</u>	<u>Mounting</u>
241-430	terminator/arrester	36"	12"	26°
241-443	cutout/arrester	48"	15"	0°
241-439	disconnect switches	48"	12"	110°

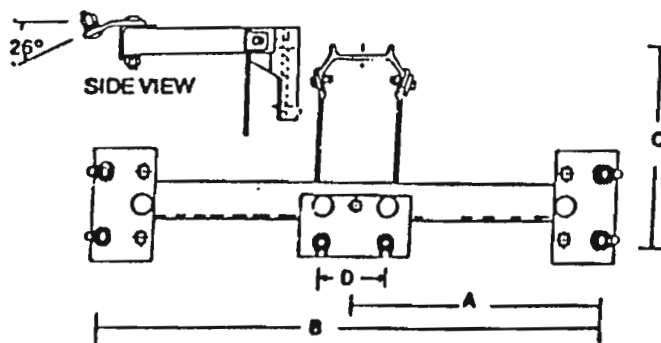
Manufacturers Data:

Stock No.

Catalogue No.

241-430

TB-EMB-1-6PA-35 (Alumaform)



DETAIL 6-11

UNDERGROUND SECONDARY CONNECTORS

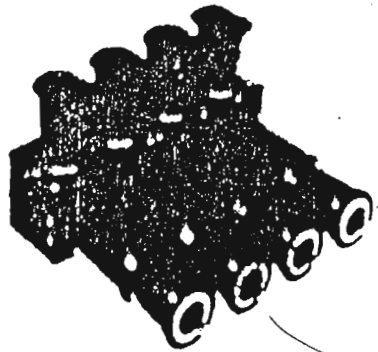
Application: URD secondary connections in handholes or direct buried
(Copper or aluminum)

Description:

<u>Stock No.</u>	<u>No. of Conductors</u>	<u>Conductor Range</u>	<u>Inhibitor Required</u>
241-721	4	#6 - 350 MCM	Yes
241-722	6	#6 - 350 MCM	Yes

Manufacturers Data:

<u>Stock No.</u>	<u>Catalogue No.</u>
241-721	PED4-350-SS-P (Utilco) RAB-4-C (Homac)
241-722	PED6-350-SS-P (Utilco) RAB-6-C (Homac)



DETAIL 6-12

UNDERGROUND SECONDARY CONNECTORS

Application: URD secondary connections in pedestals
(Copper or aluminum)

Description:

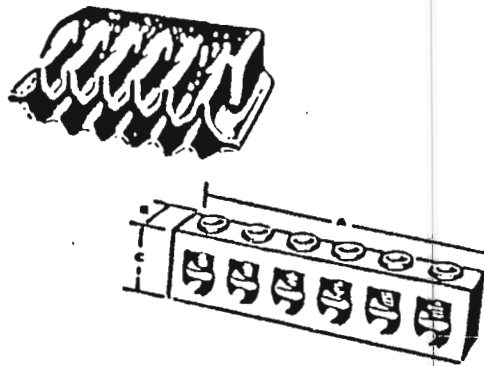
<u>Stock No.</u>	<u>No. of Conductors</u>	<u>With Plastisol Boot</u>	<u>Conductor Range</u>
241-720	6	YES	#6-250 MCM

Manufacturers Data:

Stock No.
241-720

Catalogue No.

PED 6-250
with cover no. CAA (Utilco)



DETAIL 6-13

TRANSFORMER SECONDARY CONNECTORS

Application: URD secondary connectors for use on single phase padmounted transformers.

Description:

<u>Stock No.</u>	<u>No. of Conductors</u>	<u>Conductor Range</u>	<u>For Transformer Stud</u>	<u>For Transformer Size</u>	<u>Inhibitor Required</u>
241-719	6	#6-350 MCM	5/8 - 11	thru 75 kva	Yes
241-723	6	#6-500 MCM	1 - 14	100 kva	Yes

Manufacturers Data:

<u>Stock No.</u>	<u>Catalogue No.</u>
241-719	PTF6-350-CJU-P (Utilco) SC6-350-QC-I (Superior Connector Inc.)
241-723	PTF6-500-CJ-P (Utilco)



DETAIL 6-14

LOCK RINGS

Application: Pad Mount Transformers and/or pedestal locking

Description:

<u>Stock No.</u>	<u>Ring I.D.</u>	<u>Overall Length</u>	<u>Alumoweld Gauge</u>
237-249	Variable	Variable	4

Manufacturers Data:

<u>Stock No.</u>	<u>Cataloge No.</u>
237-249	PEL-1B (Utilico)



PEL-1B

UNDERGROUND SECONDARY HANDHOLES

Application: Underground secondary installation

Description:

DIMENSIONS (IN.)

<u>Stock No.</u>	<u>A</u>	<u>B</u>	<u>C</u>	<u>D</u>	<u>E</u>	<u>F</u>	<u>G</u>	<u>H</u>	<u>J</u>	<u>K</u>
237-243	23½	13 ¾	¾	24 ⅞	15 ⅜	16 ¾	29½	19 ⅝	26½	15 ⅞

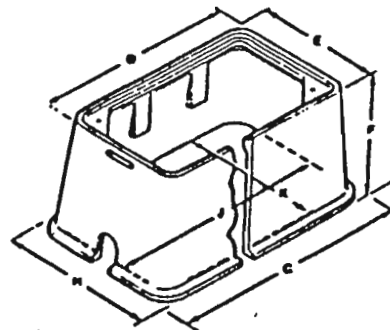
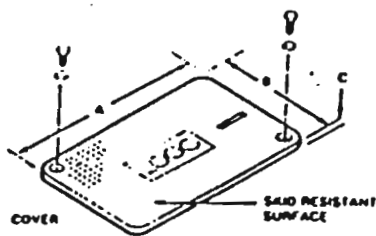
Manufacturers Data:

Stock No.

237-243

Catalogue No.

PX1324BA Box
and PX1324CA Cover
with "ELECTRIC" logo (Quazite)



DETAIL 6-16